



Z-200

Connection Base

Description

Connection base for all Detnov's ranges of conventional, analogue and carbon monoxide detectors.

This base has 4 stainless and metallic contact trips and has been designed to be a low-profile device. It is made of injected white ABS plastic and is equipped with an anti-theft system which lets you block the detector head. A tool is needed to extract the detector once it is blocked.

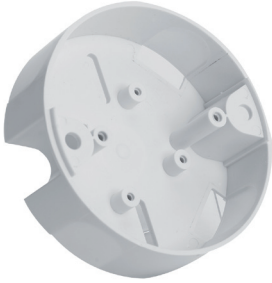
Features

- Base compatible with all DETNOV's detectors
- Compensates irregular surfaces
- Connection for a remote indicator

Technical features

Base	
Base (height x Ø):	5 mm x 100 mm

Auxiliary Devices



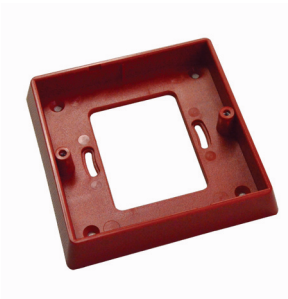
STD-200

Assembly supplement for the 200 detector's surface cabling. It lets you insert 4 cable pipes of 20 mm each. It is made of white ABS plastic, and fits with the Z-200 connection base.



PAD-10

Remote indicator with very low current consumption and great brightness.
Size: 80 mm x 80 mm x 27 mm



SMD-450

Assembly supplement for the MAD-450 and PCD-100 Manual Call Point. It lets you to embed the Manual Call Point in the wall. It is made of red ABS plastic, and fits with the MAD-450 and PCD-100 Manual Call Point.



TBD-450

Cover supplement for the MAD-450 and PCD-100 Manual Call Point. It lets you to cover the Manual Call Point. It is made of transparent ABS plastic, and fits with the MAD-450 and PCD-100 Manual Call Point. Other accessories available upper request.