



New firmware release pack 1.2.2 for CAD-250 control panels

Technical information

01/08/2020

We announce the new firmware release pack for CAD-250, VESTA system panels are already available. This new release includes the graphics management through the panel touch screen.

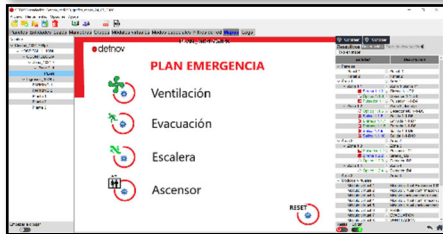


Graphics management by Vesta is an impressive change of HMI (Human Machine Interface) in fire detection panels. It makes substantially easy the events location and it allows faster actions in any case through customized virtual control dashboards.

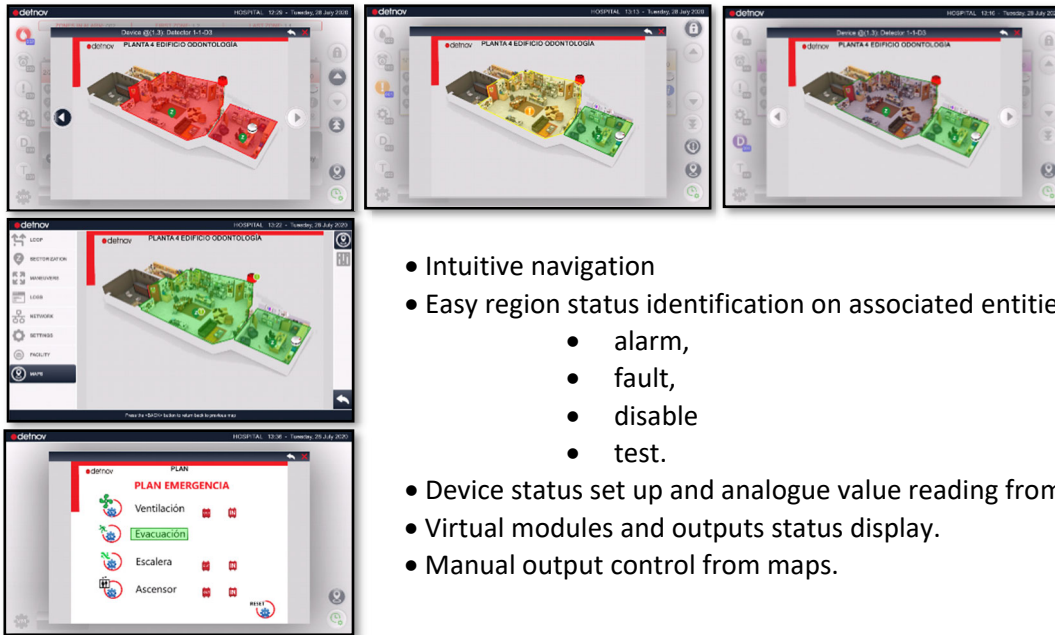
Simple and very effective configurations as well high level and detailed projects can be supported by the Vesta graphics engine also in combination with the extraordinary power and flexibility of Vesta system's manoeuvring module.

The Vesta graphic engine supports all kind of bitmap files like *.bmp, *.jpg, *.png o *.tiff, ...

Previous installed Vesta panels before 1/8/2020 can be upgraded to this new firmware including maps management keeping the existing system configuration. Upgrade by downloading firmware and software from www.detnov.com. On table below are versions compatible with maps management.



- Maps set up is done only through the panel configuration software SCD-250.
- Supports the graphics configuration for the whole network system.
- Complete graphics environment upload by one click only for the whole system. This process guarantees the database uniformity and their integrity for every node.
- Easy graphics regions creation.
- Intuitive mapping of graphic regions to any system entity, panel, area, zone, or device
- It allows, easily, and intuitively any element to be added to the map. These elements must be areas, zones, devices, virtual modules, or groups.
- Multilevel graphics tree.
- Multiple configuration options.
- Multilingual supported
- It allows dashboards design.
- The configuration software includes assistance functions such as search filters, display of not included elements, grid, repaint of region path, entity edition and PIN function for fixing elements through the whole configured maps in only one action.



- Intuitive navigation
- Easy region status identification on associated entities and devices
 - alarm,
 - fault,
 - disable
 - test.
- Device status set up and analogue value reading from panel on map.
- Virtual modules and outputs status display.
- Manual output control from maps.

Current releases for CAD-250 panel

PackUpgrade Sync250.ZIP	Control Panel SOM	PCB μAx	Lazo Loop	Network TMB252	SoftwPC
1.2.2	1.2.2	0.4.3	0.71.0	0.0.5	1.2.2

Detnov develops its products to guarantee a long-term investment of its clients. We make every effort to maintain the compatibility of new versions with existing systems and their components.

The new versions usually include enhanced or new features for improving customer experience and easier system management throughout its lifetime, as well as software corrections that may be necessary due to regulatory changes or possible errors.

We recommend updating systems to facilitate long-term system maintenance.