



DBD-70XA-I

Beam smoke detector addressable
with isolator

Description

The DBD-70XA-I beam smoke detector has been designed for use with addressable Detnov control panels. This is equipped with a motorized beam head that allows automatic self-alignment. DBD-70XA-I is a very low-power smoke detector and is powered exclusively by the addressable loop. The beam will self-align itself to the center of the reflector when commissioning and will automatically keep alignment when building movement occurs.

A reflective prism accurately detects smoke within the given distance range. The detector analyses the attenuation or dimming of light due to the smoke between the detector and the reflector to act accordingly.

With a maximum range of 160 meters, DBD-70XA-I is ideal for covering large areas, thereby saving installation costs. Up to 10 smoke detectors can be installed per loop.

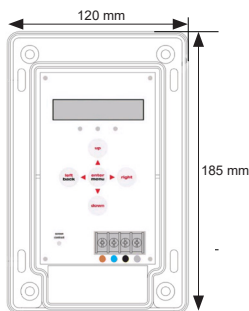
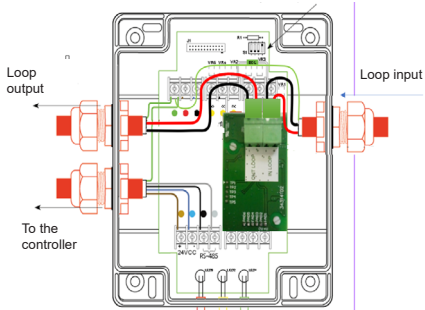
Programming and control are carried out from the user level with the control keyboard. The control keyboard allows start-up, setting alarm thresholds, setting alarm and failure times, auto test, diagnosis, etc.

Features and dimensions

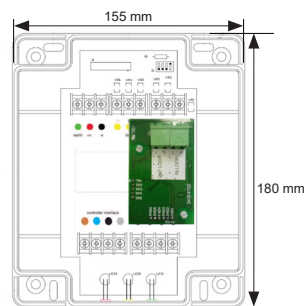
- EN 54-12, EN 54-17
- Very low consumption
- Self-alignment
- Programmable sensitivity
- Alarm and fault relay outputs
- Automatic dirt compensation
- Optional anti-condensation kit
- IP65

Wiring diagram

Switch 4 ON, all others OFF



Control module



Smoke detector

Applications

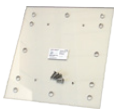
The main applications are large rooms or large areas such as industrial warehouses, warehouses, shopping malls, museums, etc.

DBD-70XA-I is ideal for the protection of large areas where the use of traditional detection technologies is difficult and costly to install.

Technical features

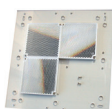
Emitter	
Power:	From loop itself from 22 to 38 VDC
Current consumption:	<4 mA in all states <18 mA in commissioning
No. of smoke detector per loop	Up to 10 (consult for over 10)
Environmental conditions	
Operating temperature:	From -10°C to +55°C
Relative humidity:	From 10% to 95% without condensation
IP Index:	IP65
Dimensions	
Emitter:	180mm x 155mm x 137mm - Weight: 1,1 kg
Controller:	185mm x 120mm x 62mm - Weight: 0,55 kg
Extension kit 70KIT140:	293mm x 293mm x 5mm - Weight: 0,8 kg
Extension kit 140KIT160:	394mm x 394mm x 5mm - Weight: 1,8 kg
Alarm sensitivity levels	
25% (1.25dB) to 50% (3dB) in 1% (0.05dB) increments (default 35% (1.87dB))	
Approvals	
EN54-12:2015, EN54-17	
Certificate n:	0370-CPR-7185

Accessories



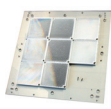
ADAPTER

Head interface adapter to mount to unistrut



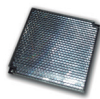
70KIT140

Kit of 3 reflectors in methacrylate plate for extension of range up to 140 meters



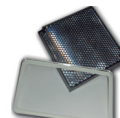
140KIT160

Kit of 8 reflectors in methacrylate plate for extension of range up to 160 meters



REF-DL

100x100 mm anti-condensation reflector



KIT-DL

Anti-condensation set for motorized head protector and reflector 100 x 100 mm



SOP-DL

Adjustable holder for reflector